

## Main pneumatic components

### Cylinders for engine

- Series PRA, double-acting cylinder
- Available diameters: Ø32, Ø40, Ø50, Ø63, Ø80, Ø100
- Available strokes:  
50\*/80\*/100\*/125\*/160\*/200\*/250/320/400/500 mm
- \*: CANNOT be used for Ø32, Ø40
- Cushioning: pneumatically, adjustable
- With magnetic piston for sensor ST6



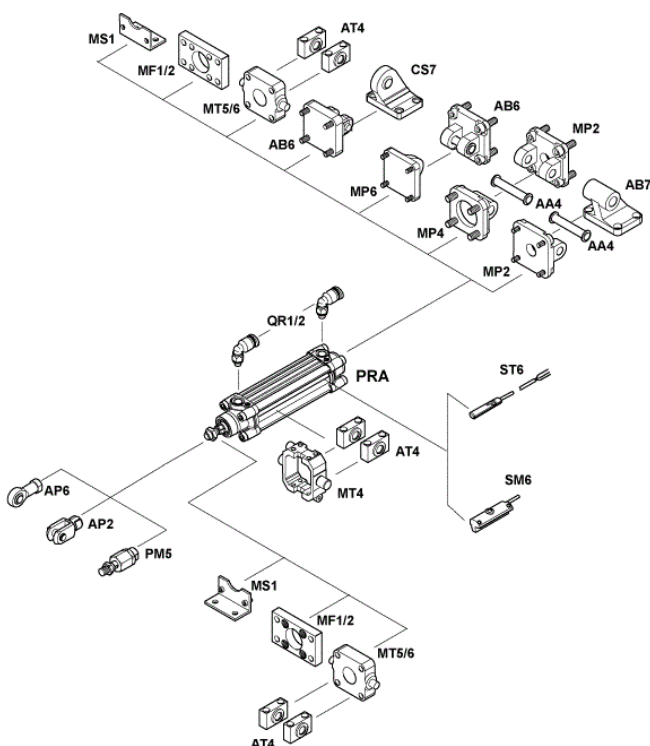
### Cylinders for other actuating

- Series MNI, double-acting and single acting cylinder
- Available diameters: Ø16, Ø20, Ø25
- Available strokes:  
25/50/80\*/100\*/125\*/160\*/200\*/250\*/320\*/400\*/500\* mm
- \*: NOT available for single-acting cylinders
- Cushioning: pneumatically, adjustable
- With magnetic piston for sensor ST6 (sensor holder is needed)

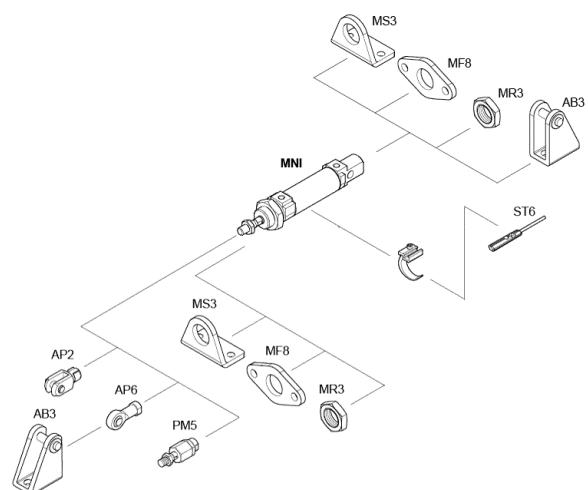


More information, catalogue pages, 2D and 3D drawings are available in the following link: <http://www.aventics.com/pneumatics-catalog>

### Accessories for PRA cylinders:



### Accessories for MNI cylinders:



## Directional valves

### Mechanically operated valves

Series	Function	Actuating	Conn.	Working pressure	Nominal flow
AP	3/2 monostable/bistable	Roller, lever, panel mounting	1/8"	0 / 10 bar	250 NI/min
CD04	3/2 monostable	Roller, lever	1/8"	-0,95 / 10 bar	900 NI/min
CD07	5/2 monostable/bistable	Roller, lever	1/4"	-0,95 / 10 bar	1400 NI/min
SC01	2/2; 3/2	Lever	1/4", 3/8", 1/2"	-0,8 / 50 bar	3500-8500 NI/min



### Pneumatically operated valves

Series	Function	Actuating	Conn.	Working press.	Nominal flow
CD04	3/2, 5/2 monostable/bistable	Pneumatic	1/8"	-0,95 / 10 bar	900 NI/min
CD07	3/2, 5/2, 5/3 monostable/bistable	Pneumatic	1/4"	-0,95 / 10 bar	1400 NI/min
CD12	3/2, 5/2, 5/3 monostable/bistable	Pneumatic	1/2"	-0,95 / 10 bar	3600 NI/min
TC08	2x3/2, 5/2, 5/3 monostable/bistable	Pneumatic	1/8"	-0,9 / 10 bar	800 NI/min
TC15	2x3/2, 5/2, 5/3 monostable/bistable	Pneumatic	1/4"	-0,9 / 10 bar	1500 NI/min



### Electrically operated valves

Series	Function	Actuating	Con n.	Working pressure	Nominal flow
CD04	3/2, 5/2 monostable/bistable	24 VDC external/internal	1/8"	External: -0,95 / 10 bar Internal: 3 / 10 bar	900 NI/min
CD07	3/2, 5/2, 5/3 monostable/bistable	24 VDC external/internal	1/4"	External: -0,95 / 10 bar Internal: 3 / 10 bar	1400 NI/min
CD12	3/2, 5/2, 5/3 monostable/bistable	24 VDC external/internal	1/2"	External: -0,95 / 10 bar Internal: 2 / 10 bar	3600 NI/min
TC08	2x3/2, 5/2, 5/3 monostable/bistable	24 VDC external/internal	1/8"	External: -0,9 / 10 bar Internal: 2,5 / 10 bar	800 NI/min
TC15	2x3/2, 5/2, 5/3 monostable/bistable	24 VDC external/internal	1/4"	External: -0,9 / 10 bar Internal: 3 / 10 bar	1500 NI/min



More information, catalogue pages, 2D and 3D drawings are available in the following link:

<http://www.aventics.com/pneumatics-catalog>